



GRADUATE STUDY WESTERN MICHIGAN UNIVERSITY

Successful alumni

Ideal location within
Michigan and the USA

High quality education

EDUCATION

GRADUATE PROGRAMS

wmich.edu/academics

■ Masters ■ Doctoral ■ Certificate

Nationally Recognized Program

* GRE/GMAT required for Masters (GRE required for all doctoral programs)
+ Higher English proficiency required for admission

BUSINESS AND ADMINISTRATION

Accountancy*+
Business Administration*
Interdisciplinary Studies

EDUCATION

Counselor Education
Early Childhood Special Education
Education and Human Development
Educational & Instructional Technology
Educational Foundations
Educational Leadership
English Education
Interdisciplinary Studies
Literacy Studies
Mathematics Education
Practice of Teaching
Rehabilitation Counseling
Science Education
Special Education
Special Education & Orientation Mobility
Student Affairs in Higher Education
Teaching
Teaching Children With Visual Impairments
Teaching English to Speakers of Other Languages*+

FINE ARTS

Interdisciplinary Studies
Music
Music Performance

HEALTH AND HUMAN SERVICES

Alcohol & Drug Abuse
Athletic Training
Audiology
Coaching Sport Performance
Counseling Psychology
Exercise & Sports Medicine*
Family & Consumer Sciences
Integrative Holistic Health Studies
Interdisciplinary Health Sciences
Interdisciplinary Studies
Occupational Therapy
Orientation & Mobility
Physical Therapy
Physician Assistant
Rehabilitation Counseling
Social Work
Speech Pathology & Audiology
Spirituality, Culture & Health
Sport Management
Vision Rehabilitation Therapy

SOCIAL SCIENCES AND HUMANITIES

Anthropology
Communication*
Comparative Religion*
Creative Writing
Economics (Applied)
English
Evaluation
Evaluation, Measurement & Research
Geography*
Geo-sciences*
Hispanic Studies
History
History of Monastic Movements
Interdisciplinary Studies
International Development Administration
Medieval Studies
Organizational Change Leadership
Philosophy
Political Science*
Psychology*
Public Administration
Sociology*+
Spanish

STEM (SCIENCE, TECHNOLOGY, ENGINEERING & MATHEMATICS)

Aerospace Engineering
Biological Sciences*
Biostatistics
Chemical Engineering
Chemistry*+
Civil Engineering
Computer Engineering*
Computer Science
Data Science
Earth Science*
Electrical & Computer Engineering
Electrical Engineering*
Engineering & Applied Sciences
Engineering Management
Geographic Information Science
Geosciences
Industrial Engineering*
Interdisciplinary Studies
Manufacturing Engineering*
Mathematics (Applied, Computational, General)
Mechanical Engineering*
Paper and Printing Science
Physics
Statistics (Applied, General)

Western Michigan University | International Admissions and Services

1903 W. Michigan Ave. | Kalamazoo, Michigan 49008-5246 | ois-info@wmich.edu | +1 (269) 387-5865



HIGH QUALITY

TOP TIER, RESEARCH 1 UNIVERSITY

120
ADVANCED DEGREE PROGRAMS

100+ COUNTRIES REPRESENTED
ON CAMPUS

ASSISTANTSHIPS AND ON-CAMPUS
EMPLOYMENT AVAILABLE

ENGLISH proficiency REQUIREMENTS

Review additional documents for English Proficiency at
wmich.edu/internationaladmissions
WMU Institutional Code 1902

80 TOEFL
6.5 IELTS
54 PTE

OR

Completion of the WMU
Center for English
Language and Culture for
International Students
(CELCIS)

The **Center for English Language and Culture for International Students (CELCIS)** offers intensive English language courses at Western Michigan University.

BENEFITS OF STUDYING ENGLISH AT CELCIS

- Students who complete CELCIS are not required to submit TOEFL or IELTS score for admission to most WMU degree programs.
- 70% of CELCIS graduates go on to study in WMU undergraduate or graduate programs.
- Learn valuable presentation, research and study skills to help you succeed in the university.

ESTIMATED cost of 2019–2020 ATTENDANCE

wmich.edu/internationaladmissions

	Graduate 1 academic year	ESL (CELCIS) (1 semester)
Application Fee	\$100	\$100
Tuition and Fees	\$16,189	\$6,075
Living Expenses	\$14,666	\$6,810
TOTAL ***	\$30,955	\$12,985

*** Add \$4,000 per year for each dependent. If enrolled in ESL add \$2,000 per semester for each dependent.

GRADUATE FUNDING

wmich.edu/grad

While most U.S. federal financial aid is restricted to U.S. citizens and permanent residents, international graduate students may apply to other funding sources. Common funding sources are WMU graduate appointments, grants and fellowships. Graduate students should contact their academic department directly to inquire about available funding opportunities.

91% OF ALUMNI ARE EMPLOYED OR IN GRAD SCHOOL WITHIN 3 MONTHS OF GRADUATION

FULL-TIME IMMIGRATION AND
INTERNATIONAL SERVICES STAFF

OPT WORKSHOPS HOSTED
BY UNIVERSITY STAFF OF
IMMIGRATION EXPERTS



SUCCESSFUL ALUMNI



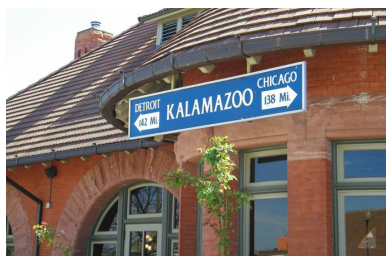
IDEAL LOCATION

Michigan ranked in the **top 10 affordable states** in the United States (CNBC).

Ideal location within **Michigan and the USA.**

Kalamazoo is ranked in the **top 20 college destinations** (American Institute for Economic Research).

2.5 hour train from Kalamazoo to Chicago.



APPLICATION PROCEDURES

for graduate students at
WMU

wmich.edu/internationaladmissions

RESEARCH PROGRAM REQUIREMENTS

Research your graduate program at
wmich.edu/grad.

COMPLETE ONLINE APPLICATION

- Complete your online application at wmich.edu/apply
- Upload the following documents:
 - ✓ Proof of degree*
 - ✓ Bank statement or scholarship letter
 - ✓ Copy of your passport identification page
 - ✓ Official proof of English Language Proficiency (if applicable)
** Translated to English (if applicable)*
- Pay \$100 application fee

Deadlines to apply:

(Some graduate programs may have earlier deadlines)

Fall April 1	Spring August 1	Summer January 15
-----------------	--------------------	----------------------

SUBMIT PROGRAM-SPECIFIC REQUIREMENTS

- Many graduate programs require written narrative statements, specific standardized tests, letters of recommendation and/or other support materials.
- Applicants should carefully review the application requirements for their program of interest.

Western Michigan University | International Admissions and Services

1903 W. Michigan Ave. | Kalamazoo, Michigan 49008-5246 | oisss-info@wmich.edu | +1 (269) 387-5865





UNDERGRADUATE STUDY WESTERN MICHIGAN UNIVERSITY

Competitive tuition
rates and scholarships

Ideal location within
Michigan and the USA

High quality education

EDUCATION

UNDERGRADUATE PROGRAMS

wmich.edu/academics

AVIATION

Aviation Management & Operations
Aviation Technical Operations
Flight Science

EDUCATION

Art Education
Biology Education
Business Education
Chemistry Education
Early Childhood Professional Education
Earth Science Education
Integrated Science Education
Language Arts Education
Mathematics Education
Social Studies Education
Elementary Professional Education
English Education
Family & Consumer Science Teacher Education
French Education
German Education
History Education
Latin Education
Mathematics Education
Music Education+
Occupational Education Studies
Physical & Health Education (Teacher, Coach)
Physics Education
Political Science Education
School Health Education
Social Sciences Education
Spanish Education
Special Education & Elementary Education
*Workforce Education & Development Science Education

HEALTH AND HUMAN SERVICES

Athletic Training
Audiology
Biomedical Services
Child & Family Development
Dietetics
Exercise Science
*Family & Consumer Science
Health Informatics & Information Management
*Interdisciplinary Health Services
Music Therapy
Nursing
Occupational Therapy
*Orientation & Mobility
Public Health
Recreation
*Social Work
Speech Pathology & Audiology
*Youth & Community Development

BUSINESS AND ADMINISTRATION

Accountancy
Advertising & Promotion
Business Analytics
Business Law
Business-Oriented Chemistry
eBusiness Marketing
Economics (Business)
Entrepreneurship
Fashion Merchandising & Design
Finance
Food & Consumer Package Goods Marketing
Food Service Operations & Sustainability
Health Informatics & Information Management
Human Resource Management
Industrial Technology
Integrated Supply Chain and Management
Interior Design
Management
Marketing
Personal Finance Planning
Product Design
Sales & Business Marketing
Telecommunications & Information

FINE ARTS

Art
Art History
Dance
Graphic Design
Jazz Studies
Multimedia Arts Technology - Music
*Music (Composition, Performance, Theatre)
Music Therapy+
Musical Arts
Theatre

SOCIAL SCIENCE AND HUMANITIES

African American & African Studies
Anthropology
*Communication Studies (General, Interpersonal, Organizational)
Community & Regional Planning
Criminal Justice
*Economics
English
Environment & Sustainability Studies
Film, Video & Media Studies
French
Freshwater Science & Sustainability
Gender & Women's Studies
German
Global & International Studies
History
Japanese
Journalism
Latin
Philosophy
Political Science
Psychology
Public History
Public Relations
Religion
*Sociology
*Spanish & Hispanic Studies
Student-Planned Curriculum
Sustainable Brewing
Tourism & Travel

STEM (SCIENCE, TECHNOLOGY, ENGINEERING & MATH)

*Aerospace Engineering
Biochemistry
*Biological Services
*Chemical Engineering
*Chemistry
*Civil Engineering
*Computer Engineering
Computer Information Systems
*Computer Science
Construction Engineering
Data Science
*Earth Science
*Electrical Engineering
Engineering Design Technology
Engineering Management Technology
Geochemistry
Geography
Geology Geophysics
*Graphic and Printing Science
Hydrogeology
*Industrial & Entrepreneurial Engineering
*Manufacturing Engineering Technology
Mathematics
*Mechanical Engineering
Physics
*Statistics

+ Higher English language proficiency required for admission

* ACCELERATED GRADUATE PROGRAMS *

EARN A BACHELOR'S AND MASTER'S DEGREE IN 5 YEARS WITH ONE OF OUR ACCELERATED GRADUATE PROGRAMS!

HIGH QUALITY

The WMU College of Aviation is consistently ranked among the top 5 in the nation.

Integrated Supply Chain Management ranked #8 in top U.S. supply chain programs.

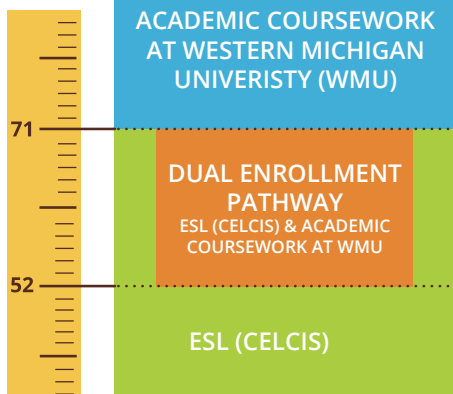
Jazz Studies program is one of the top 3 schools in the nation for DownBeat Awards.

The Public History program is one of only 3 undergraduate programs in the nation.

ENGLISH proficiency REQUIREMENTS

Review additional documents for English Proficiency at wmich.edu/internationaladmissions

TOEFL



The **Center for English Language and Culture for International Students (CELCIS)** offers intensive English language courses at Western Michigan University.

BENEFITS OF STUDYING ENGLISH AT CELCIS

- Students who complete CELCIS are not required to submit TOEFL or IELTS score for admission to most WMU degree programs.
- 70% of CELCIS graduates go on to study in WMU undergraduate or graduate programs.
- Learn valuable presentation, research and study skills to help you succeed in the university.

SCHOLARSHIP for WMU INTERNATIONAL STUDENTS

wmich.edu/internationaladmissions

The Diether H. Haenicke Scholarship is a merit-based scholarship awarded automatically to undergraduate students upon admission! The scholarship is renewable up to a total of eight consecutive semesters.

GPA 4.0	GPA 3.5-3.99	GPA 3.0-3.49
\$16,000	\$5,000	\$7,500
PER YEAR	(YEARS 1-2)	(Years 3-4) PER YEAR

\$6.4 MILLION

awarded to international students in 2015-2016

ESTIMATED cost of 2019-2020 ATTENDANCE

wmich.edu/internationaladmissions

	Undergraduate* (lower level)** (1 academic year)	Dual Enrollment Pathway (1 academic year)	ESL (CEL CIS) (1 semester)
TOEFL	(71 and above)	(52-70)	(below 51)
Application Fee	\$100	\$100	\$100
Tuition and Fees	\$17,541	\$19,678	\$6,075
Living Expenses	\$12,841	\$12,841	\$6,810
TOTAL ***	\$30,482	\$30,619	\$12,985

* Tuition varies based on program of study

** Undergraduate lower level = 0-55 credit hours. Undergraduate upper level = 56+ hours

*** Add \$4,000 per year for each dependent. If enrolled in ESL (CEL CIS) add \$2,000 per semester for each dependent.

COMPETITIVE TUITION & SCHOLARSHIPS



IDEAL LOCATION

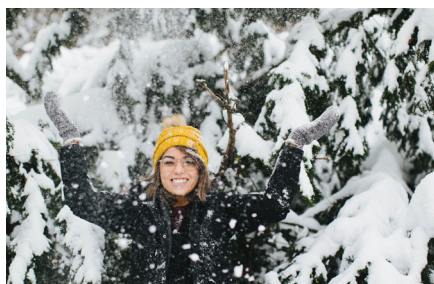


Michigan ranked in the **top 10 affordable states** in the United States (CNBC).

Ideal location within **Michigan and the USA**.

Kalamazoo is ranked in the **top 20 college destinations** (American Institute for Economic Research).

2.5 hour train from Kalamazoo to Chicago.





THREE STEPS to apply to WMU

wmich.edu/internationaladmissions

1. APPLY

Complete online application
wmich.edu/apply

2. UPLOAD DOCUMENTS

Upload the following documents:

- Official and complete high school/ post-secondary education transcripts*
- Proof of degree*
- Bank statement or scholarship letter
- Copy of your passport identification page
- Official proof of English language proficiency (if applicable)

* Translated to English (if applicable)

Deadlines to apply:

Fall June 15	Spring October 15	Summer March 15
-----------------	----------------------	--------------------

3. PAY APPLICATION FEE

Pay \$100 application fee

Over 100 countries
represented on the
WMU campus.

International Friendship
Program that connects
international students with
the Kalamazoo community.

Full-time immigration and
international services staff.





GRADUATE RESEARCH PROGRAM SPEND YOUR “SANDWICH YEAR” AT WESTERN MICHIGAN UNIVERSITY

RESEARCH

Participate and conduct research at Western Michigan University, a preferred research destination.

PUBLISH

Work alongside renowned faculty and co-author articles for publication in internationally recognized journals.

EXPERIENCE

Gain skills through collaboration with international staff and faculty and grow your resume. Become a competitive applicant in your professional field.

Many graduate programs encourage students to participate in a research year abroad. Western Michigan University (WMU) invites international graduate students to spend this “sandwich year” at WMU!

WMU is classified as a “high research university” by the Carnegie Classification of Institutions of Higher Education. Located in Kalamazoo, Michigan, WMU combines the resources of a high-research university with the personal attention and friendly atmosphere of a smaller institution.

The WMU Graduate Research Program participates with several colleges and departments including the Haworth College of Business and the College of Engineering and Applied Sciences.

wmich.edu/international

WESTERN MICHIGAN UNIVERSITY

HAENICKE INSTITUTE FOR GLOBAL EDUCATION

IMMIGRATION COMPLIANCE

immigration-compliance@wmich.edu | +1 (269) 387-5865

wmich.edu/international



NEXT STEPS

STEP 1: LEARN MORE

Review departments and professors at Western Michigan University to search for opportunities that match your research interests. Helpful resources for this process include:

- WMU Global Expertise Database
wmich.edu/international/database
- WMU Research Magazine
wmich.edu/magazine
- WMU Research and Innovation
wmich.edu/research

STEP 2: INQUIRE

Contact the WMU Haenicke Institute for Global Education's Immigration Compliance office at immigration-compliance@wmich.edu.

STEP 3: COMPLETE INTAKE FORM

WMU Immigration Compliance will provide an Intake Form that will review the department, professor and research interests of the applicant. This form should be returned to Immigration Compliance as soon as possible for review.

LOOKING FORWARD

Applicants will be contacted by WMU after review of the Intake Form is completed. Individuals selected for the Graduate Research Program will continue on to negotiate terms, export control review and visa application.

**HAENICKE INSTITUTE FOR GLOBAL EDUCATION
IMMIGRATION COMPLIANCE**

immigration-compliance@wmich.edu | +1 (269) 387-5865
wmich.edu/international

